



Purchase Order Entry with Quantities User Guide

Important Notice

TaiRox does not warrant or represent that your use of this software product will be uninterrupted or error-free or that the software product can be run with any other version of Sage ERP Accpac other than 5.4A, 5.5A, 5.6A, 6.0A, or any version of Sage 300 ERP other than 2012 or that the information in this document is completely accurate. TaiRox warrants that any media by which you have received this software is free from defects. TaiRox will replace any such defective media. TaiRox expressly disclaims all other warranties, representations, conditions and guarantees of any kind including, but not limited to warranties for merchantability or fitness for a particular use.

Purchase Order Entry with Quantities User Guide

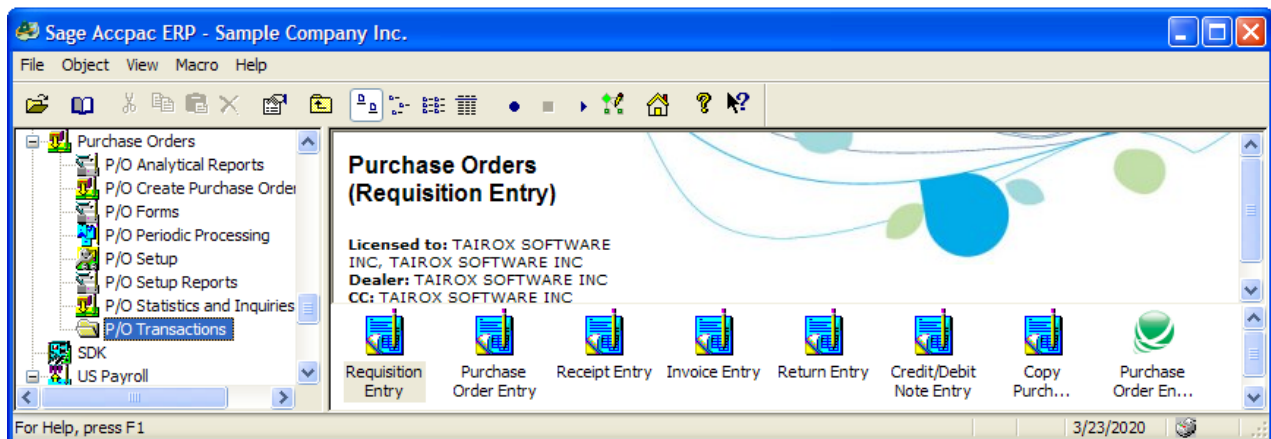
Summary

Purchase Order Entry with Quantities is a customization of the Sage ERP Accpac Purchase Order Entry screen. Visually there is an additional section at the bottom of the screen that displays item quantity information. This section is similar to the bottom of the Order Entry screen.

Internally, Purchase Order Entry with Quantities performs its actions through Accpac business objects, ensuring proper multi-user operation. The technology used increases the probability that the program will operate unchanged with future versions of Accpac. As illustrative of that technology, Purchase Order Entry with Quantities works with versions 5.4, 5.5, 5.6 and 6.0 of Accpac.

Running Purchase Order Entry with Quantities

Purchase Order Entry with Quantities can be launched from Accpac P/O Transactions as shown here. An Accpac administrator will create the Purchase Order Entry with Quantities icon as the final installation step.



Purchase Order Entry with Quantities User Guide

Running Purchase Order Entry with Quantities (continued)

When launched, Purchase Order Entry with Quantities displays a purchase order entry screen with the item quantities section displayed below the Post button. Drilldown from the quantities is supported, available as in Order Entry.

PD Number: *** NEW ***

Vendor Number: 1200 Vendor Name: Chloride Systems

Last Receipt No.: Source: Entered

Order | Taxes | Optional Fields | Totals

Template: From Requisition: On Hold: Job Related:

PO Date: 03/23/2020 FOB Point: Arrival Date: / /

PO Type: Active

Ship-To Location: Ship-Via: Terms Code: DUETBL Due by Invoice Date

Bill-To Location: Vendor Acct. Set: USA Accounts payable, Other

Description: Reference:

Lin...	Completed	Item Number	Item Description	Location	Drop-Ship	Quantity Ordered	Unit of Measure
1	No	A1-103/0	Fluorescent Desk Lamp	1	No	0	Ea.

Item/Tax... Calc. Taxes Consolidate Order Subtotal: 0.00

Post Delete History... Close

	Qty. on Hand	Qty. on Sales Order	Qty. on Purchase Order	Qty Committed	Qty. Available
Location 1 (Ea.)	149	13	310	0	149
All Locations (Ea.)	669	44	486	0	669