



Restore G/L History

User Guide

Important Notice

TaiRox does not warrant or represent that your use of this software product will be uninterrupted or error-free or that the software product can be run with any other version of Sage ERP Accpac other than 5.6A, 6.0A, or any version of Sage 300 other than 2012, 2014, 2016, 2017, 2018 or 2019 or that the information in this document is completely accurate. TaiRox warrants that any media by which you have received this software is free from defects. TaiRox will replace any such defective media. TaiRox expressly disclaims all other warranties, representations, conditions and guarantees of any kind including, but not limited to warranties for merchantability or fitness for a particular use.

TaiRox Restore G/L History User Guide

Summary

Restore G/L History restores previously deleted Transaction Detail History and Fiscal Set History to an Accpac company from a database dump. Prior to version Sage 300 version 5.5, 100 Edition and 200 Edition General Ledger supported a maximum of 2 years and 3 years of Fiscal Set and Transaction Details years of history respectively, forcing users to delete older data before being able to create a new year. This changed as of version 5.5, which now allows retaining up to 7 years of history for each of the Transaction Details and Fiscal Sets.

Overview

Restore G/L History reads backups in Sage Accpac's standard DBDump format or in TaiRox's Fast DBTools formats (.REC or .CSV).

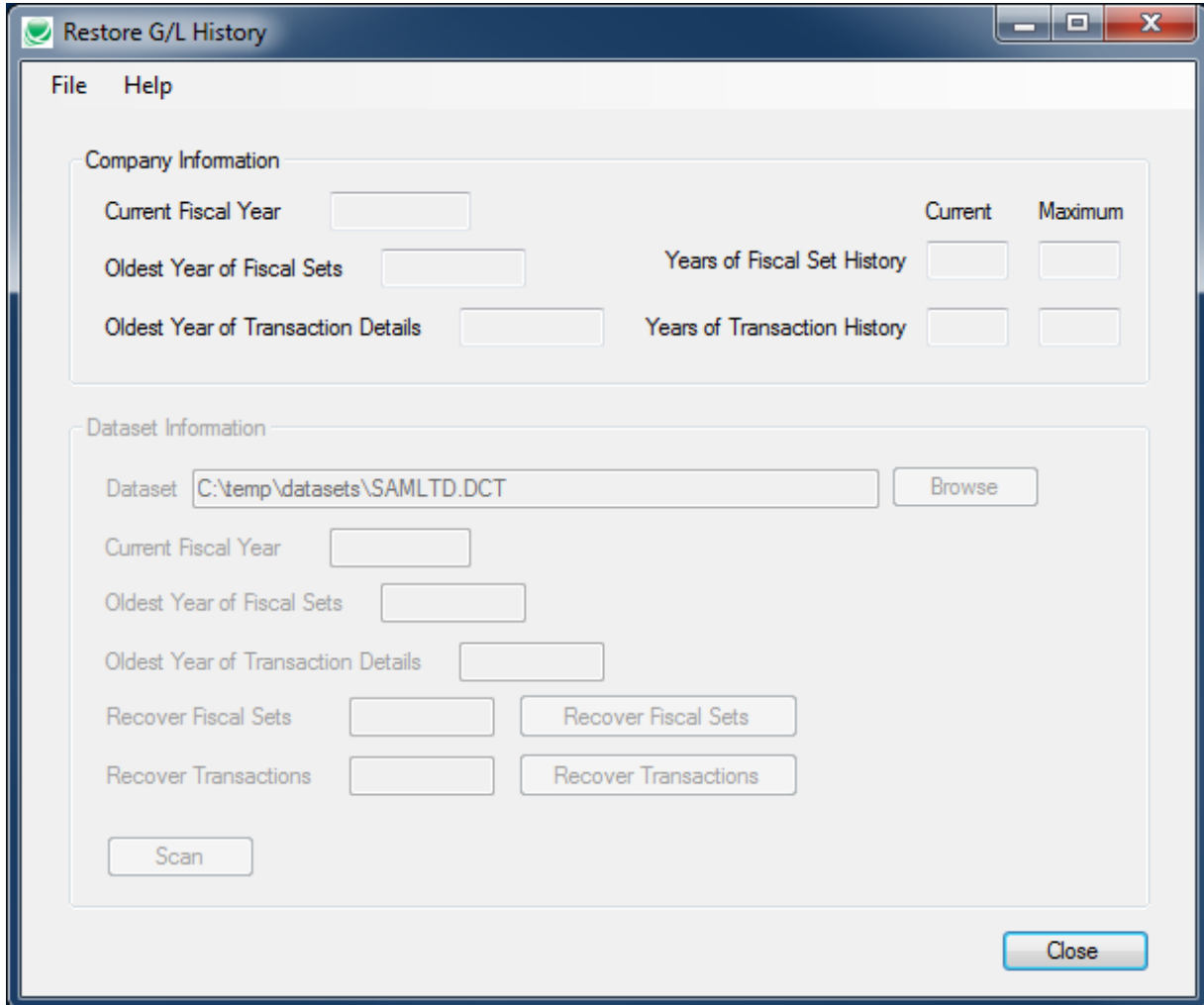
You recover Fiscal Sets and Transaction Details for the year preceding the earliest year currently on file. Once this is recovered you repeat the process, essentially working backwards through the years.

Restore G/L History checks to see if all accounts in the year being restored exist in the company. If not then the year cannot be restored.

Restore G/L History does not restore provisional fiscal sets. Also, the closing balances for Actual fiscal sets being restored are compared to the opening balances in the following year. If they do not match then the year cannot be restored. Note: closing balances for Quantity, Reporting, and Budget fiscal sets are not checked, just Actual.

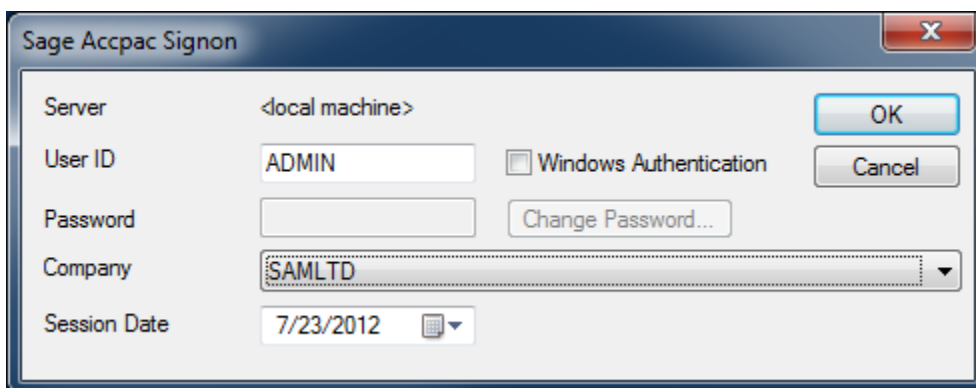
TaiRox Restore G/L History User Guide

Using Restore G/L History



Use the following steps to restore Fiscal Set and Transaction Details history:

Step 1: Sign on to an Accpac company by selecting the Sign On choice from the File menu. The standard Accpac sign-on dialog will appear.



TaiRox Restore G/L History User Guide

After you sign on information about the company will be displayed.

Restore G/L History - Sample Company Limited

File Help

Company Information

Current Fiscal Year	2020	Current	Maximum
Oldest Year of Fiscal Sets	2019	Years of Fiscal Set History	1 99
Oldest Year of Transaction Details	2019	Years of Transaction History	1 99

Dataset Information

Dataset C:\temp\datasets\SAMLTD.DCT Browse

Current Fiscal Year

Oldest Year of Fiscal Sets

Oldest Year of Transaction Details

Recover Fiscal Sets Recover Fiscal Sets

Recover Transactions Recover Transactions

Scan

Close

Step 2: Select the dataset that contains the older fiscal sets and transaction details to be restored.

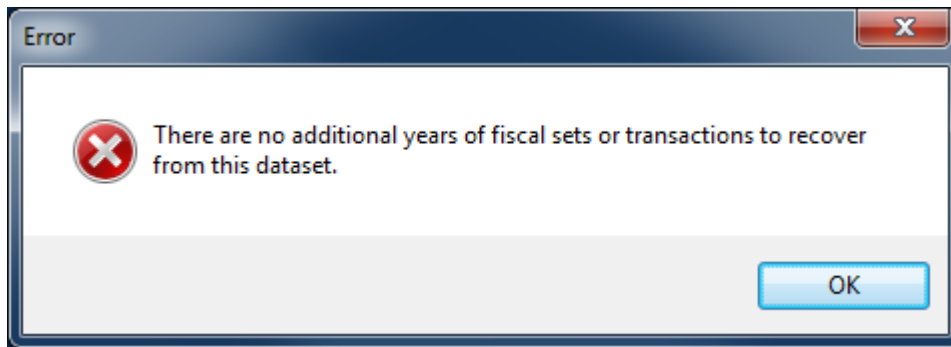
** It is important to select a backup in which the year(s) to be recovered is(are) not the last year closed. If this is the case it is possible that adjustments to the year could have been posted after the backup was made.

** Restore G/L History will not allow you to restore data for years in which data already exists.

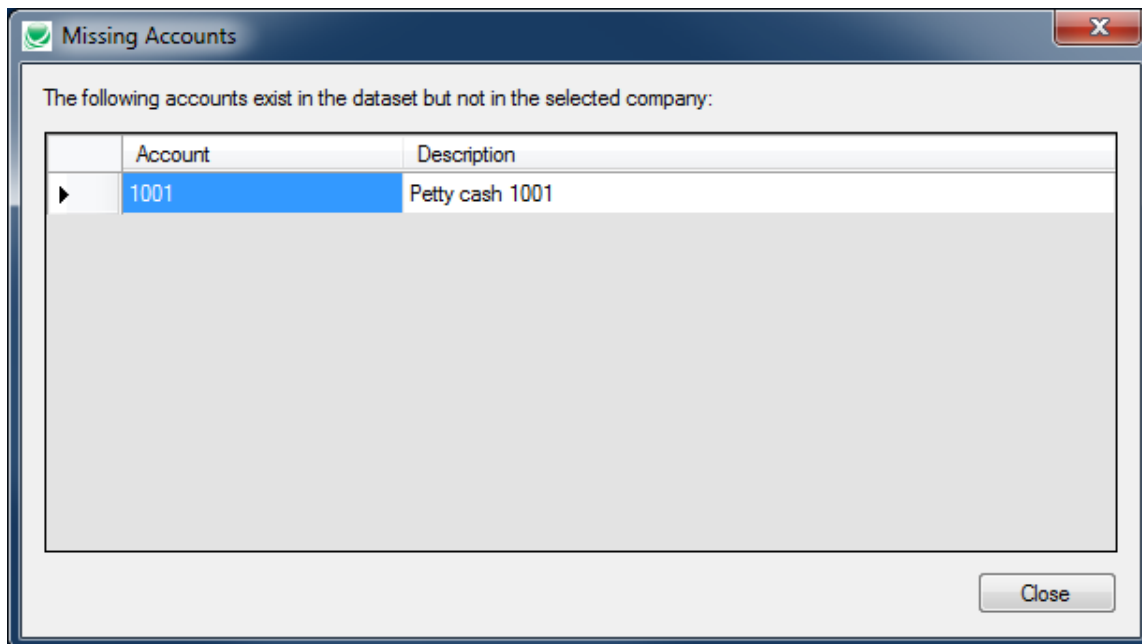
Step 3: Click on the Scan button to determine if the dataset is useable.

Restore G/L History checks to see if the dataset contains any years of fiscal sets or transaction details not yet in the company. If there is no data for fiscal years not already in the company then an error is displayed and you will not be allowed to proceed.

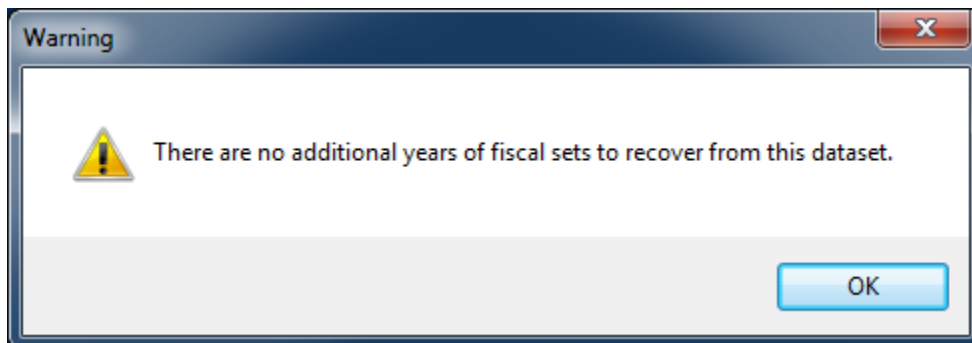
TaiRox Restore G/L History User Guide



If data is found then Restore G/L History checks for GL accounts that are in the dataset but not in the company. If any accounts are missing then the Missing Accounts dialog is displayed, showing the missing accounts, and you will not be allowed to proceed.



At this point you may receive one of two warnings. It is possible that the dataset contains recoverable fiscal sets or transactions, but not both.



TaiRox Restore G/L History User Guide

At this point the form will be updated to show which year of fiscal sets and/or which year of transactions can be restored and the corresponding buttons will be enabled if applicable.

Restore G/L History - Sample Company Limited

File Help

Company Information

Current Fiscal Year	2020	Current	Maximum
Oldest Year of Fiscal Sets	2019	Years of Fiscal Set History	1 99
Oldest Year of Transaction Details	2019	Years of Transaction History	1 99

Dataset Information

Dataset C:\temp\databases\SAMLTD.DCT Browse

Current Fiscal Year 2020

Oldest Year of Fiscal Sets 2018

Oldest Year of Transaction Details 2018

Recover Fiscal Sets 2018 Recover Fiscal Sets

Recover Transactions 2018 Recover Transactions

Scan

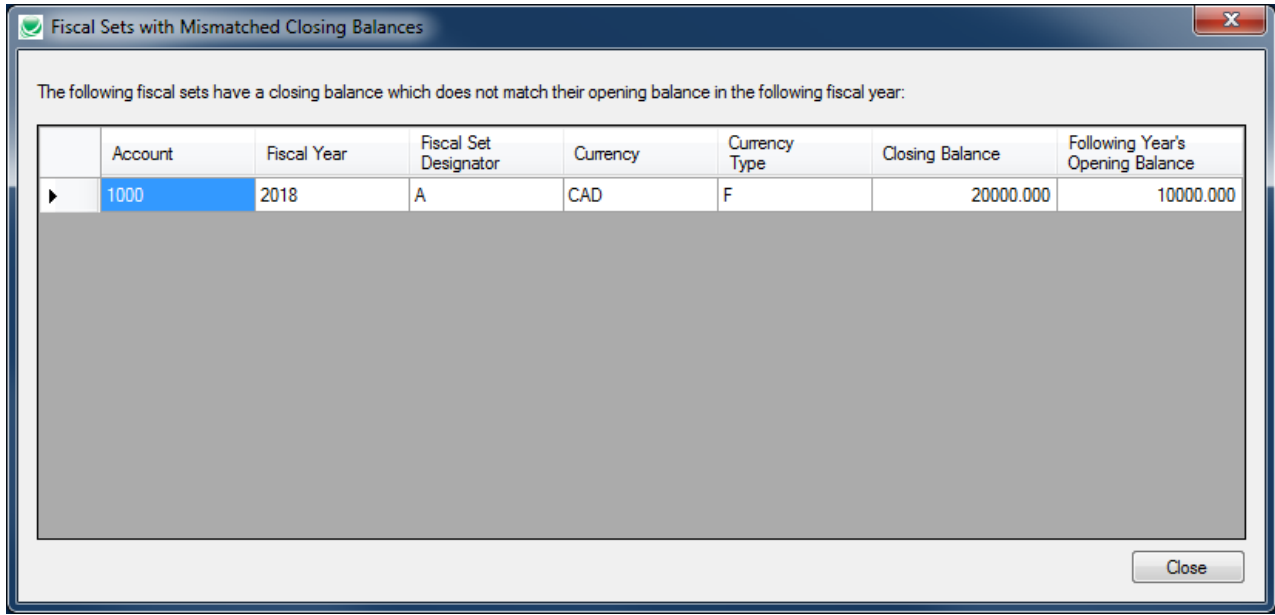
Close

Step 4: Click on the Recover Fiscal Sets button to restore the indicated year of fiscal sets.

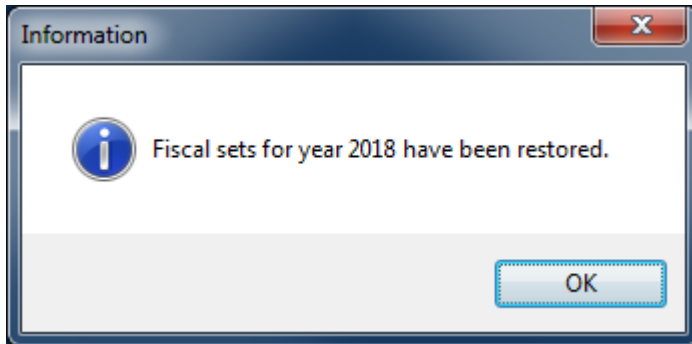
Before fiscal sets are restored the program checks that the closing balances for the year being restored are the same as the opening balances of the year following it.

If the closing balances do not match then you will not be able to restore the fiscal sets for that year. The Fiscal Sets with Mismatched Closing Balances dialog will display all fiscal sets that would be out of balance.

TaiRox Restore G/L History User Guide

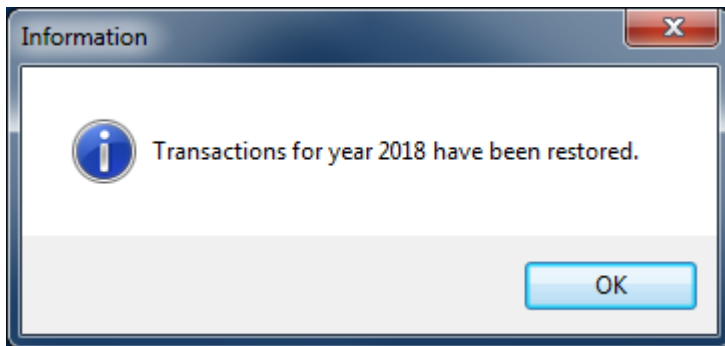


If there are no errors then the following dialog will appear after the fiscal sets have been restored.



Step 5: Click on the Recover Transactions button to restore the indicated year of transactions.

The following dialog appears when the transactions have been restored.



After each operation is completed the company information is updated as is the information regarding the fiscal set and transaction years available to restore.