



Set Recurring Dates User Guide

Important Notice

TaiRox does not warrant or represent that your use of this software product will be uninterrupted or error-free or that the software product can be run with any other version of Sage ERP Accpac other than 5.6A, 6.0A, or any version of Sage 300 ERP other than 2012 or that the information in this document is completely accurate. TaiRox warrants that any media by which you have received this software is free from defects. TaiRox will replace any such defective media. TaiRox expressly disclaims all other warranties, representations, conditions and guarantees of any kind including, but not limited to warranties for merchantability or fitness for a particular use.

TaiRox Set Recurring Dates

Summary

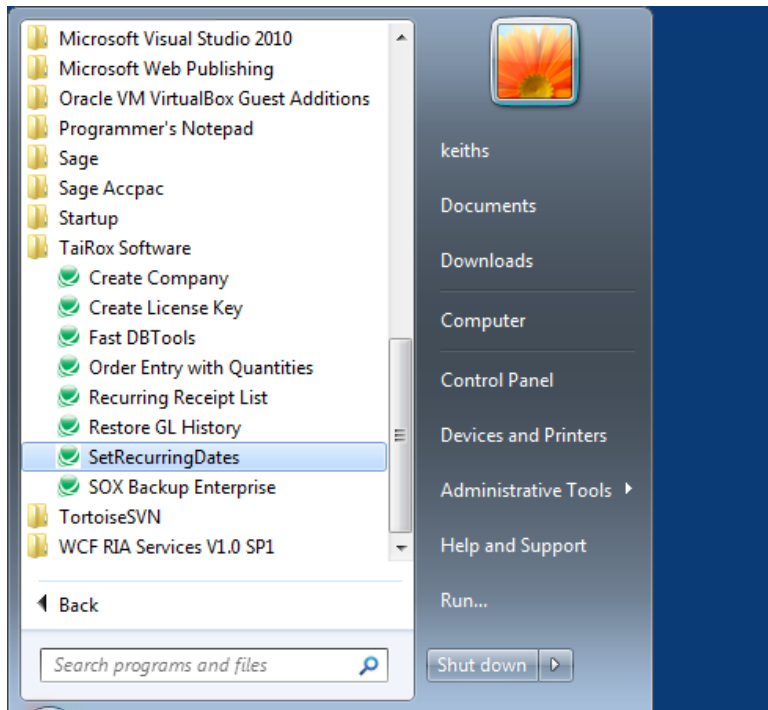
TaiRox Set Recurring Dates provides a means of changing the Last Run Date for G/L Recurring Entries, something not possible using Sage 300 ERP (formerly known as Sage ERP Accpac). In the event that the Last Run Date is inadvertently set (e.g. 2021 is typed when 2012 is intended), the only way to set the Last Run Date correctly has been to edit database tables directly.

Overview

TaiRox Set Recurring Dates selects G/L Recurring Entries from a range of Recurring Entry Codes and a range of Last Run Dates. The Last Run Date criteria may be useful to track down values that are incorrect. Once the selected items are displayed, their Last Run Dates can be edited in a grid. Pressing the Process button will update the recurring entry data for the selected records.

Running Set Recurring Dates

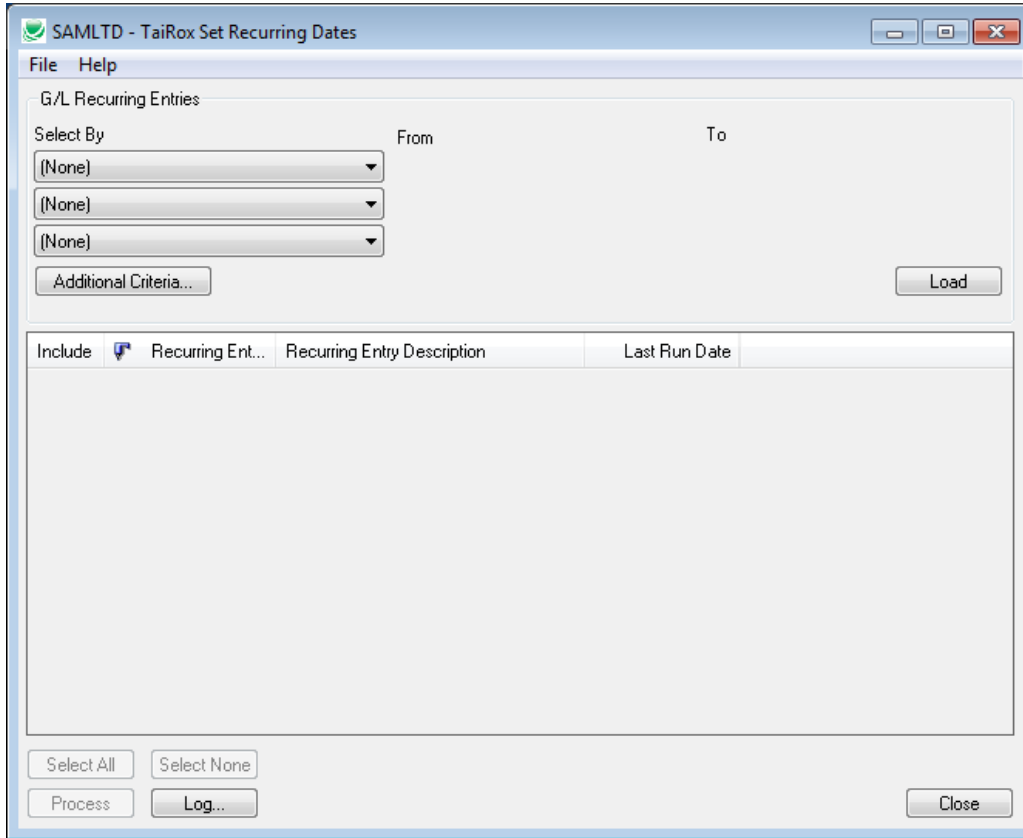
The program can be run by selecting it from the Start menu (All Programs → TaiRox Software → Set Recurring Dates) as seen here:



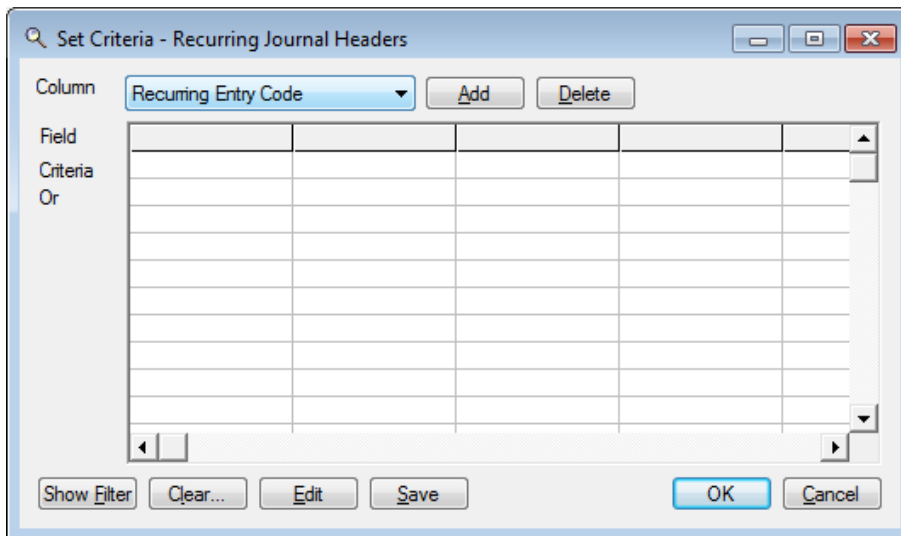
TaiRox Set Recurring Dates

Running Set Recurring Dates (continued)

Launching the program will present a screen that allows you to the G/L Recurring Entries to be updated using various ranges, in a style identical to that used by core modules:

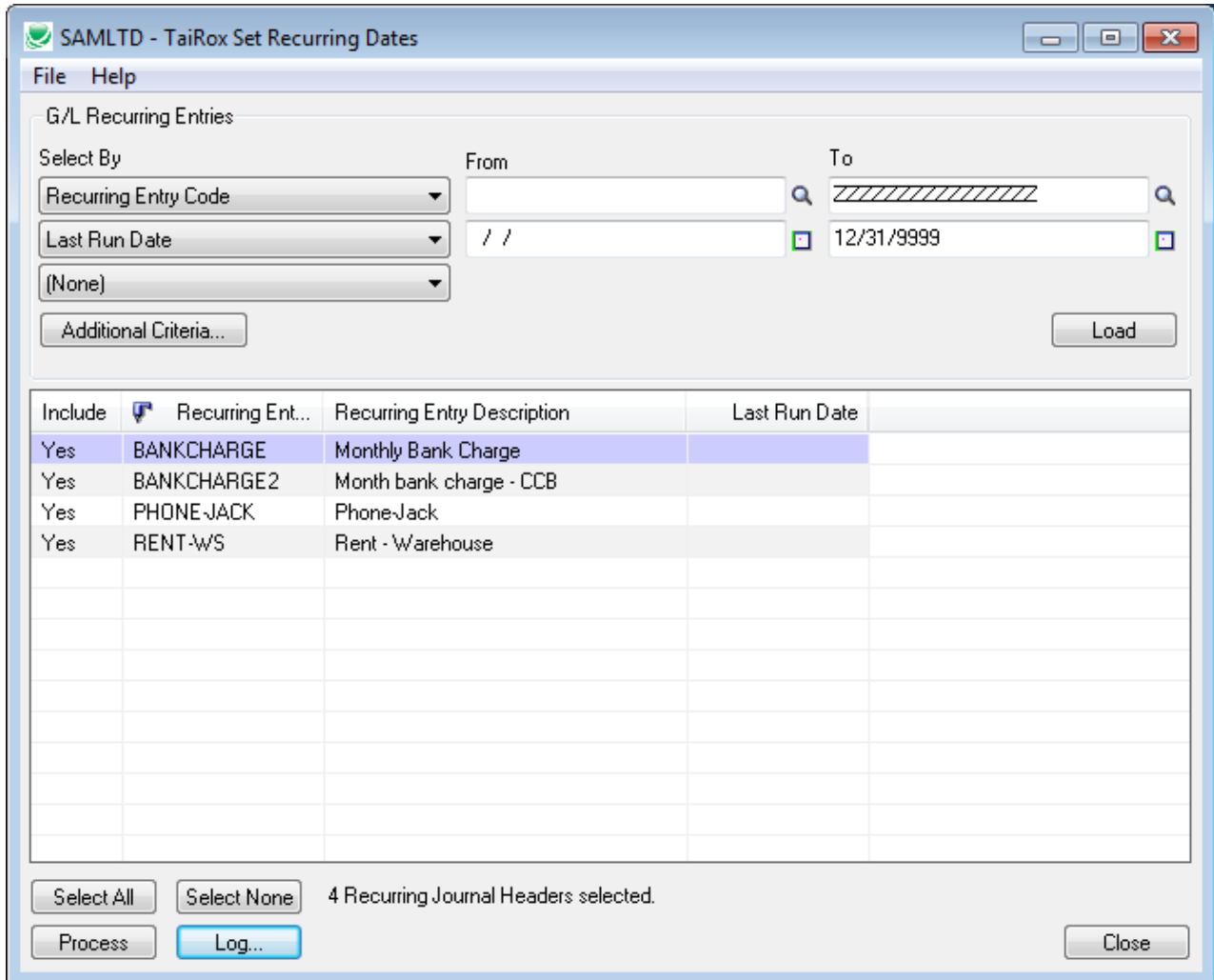


Additional criteria can be used, again in the core-module style:



TaiRox Set Recurring Dates

When the Load button is pressed Recurring Entries that match the selection criteria will be displayed, with full drill-down support:



The records can be selected / de-selected on an individual basis (“cherry-picked”).

Edit the Last Run Date column, entering the date you want to set for that entry.

When the Process button is clicked, the Last Run Date will be updated for the selected records.