



Fast User Deletion

User Guide

© 2009-2025 TaiRox Software Inc. All rights reserved.

Important Notice

TaiRox does not warrant or represent that your use of this software product will be uninterrupted or error-free or that the software product can be run with any versions of Sage 300 other than 2012 to 2025, or that the information in this document is completely accurate. TaiRox warrants that any media by which you have received this software is free from defects. TaiRox will replace any such defective media. TaiRox expressly disclaims all other warranties, representations, conditions and guarantees of any kind including, but not limited to, warranties for merchantability or fitness for a particular use.

Fast User Deletion Features

Fast User Deletion is a SQL Server-specific program for deleting Sage 300 users from a Sage 300 server. Typically, the program is used as a final step when migrating to a new Sage 300 environment.

The program deletes all user information and logins from the target server **except** the ADMIN and GUEST logins in the target environment. These logins were created by Sage 300 when you set up the Sage 300 environment.

```
##S3_LOGIN_ADMIN##SAGE300VAULT
##S3_LOGIN__GUEST__##SAGE300VAULT
```

On SQL Server, the program deletes users from [SQL Server Name] > Security > Logins and from the Sage 300 Vault and Store databases.

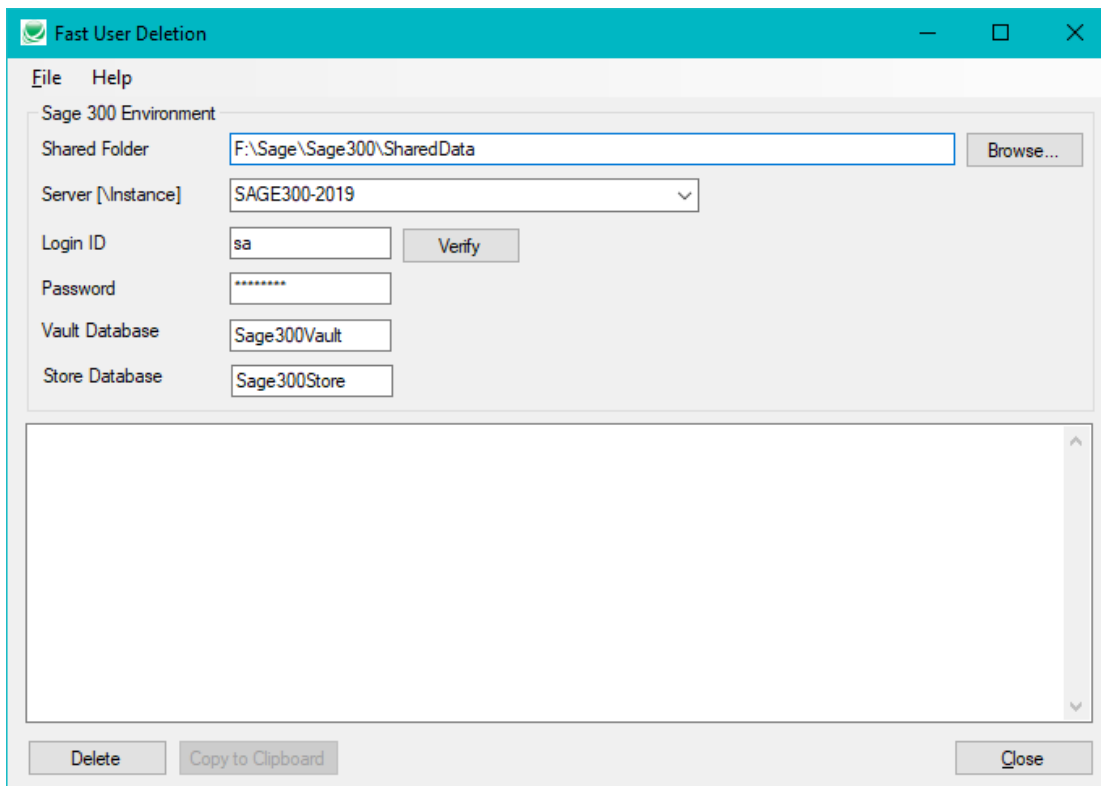
Note: Fast User Deletion is packaged with TaiRox SOX User Management. You use the SOX User Management product license key to license Fast User Deletion.

Running Fast User Deletion

Make sure that users do not need any access to the Sage 300 environment before you delete users. You cannot “undo” this procedure.

Launch Fast User Deletion from the Windows Start List or from a shortcut on the desktop – like other Windows programs.

You must have access to SQL Server Security and rights to the target databases in order to use the program.



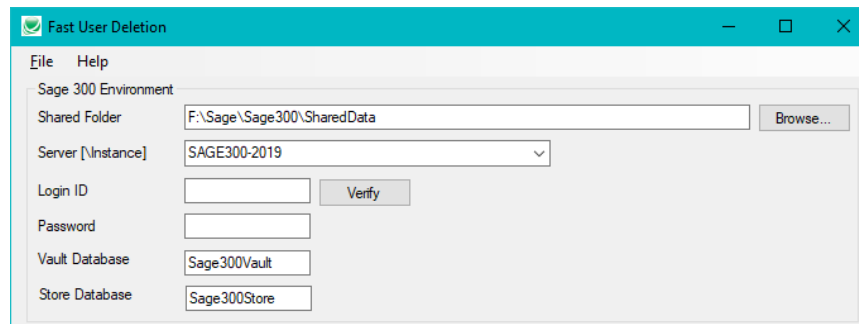
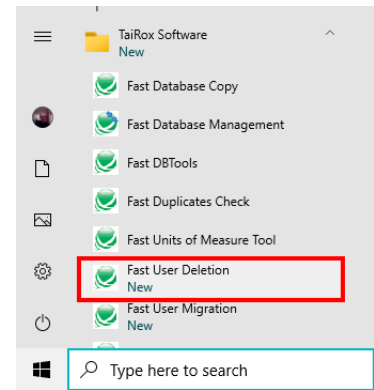
To start Fast User Deletion and log in:

1. Click the Start List entry or shortcut to start Fast User Deletion.

If Fast User Deletion does not appear in the Windows Start List or you do not have the shortcut on your Windows desktop, contact your supervisor or IT department.

Note:

- You must have access to the target server and Sage 300 databases and SharedData folder in order to use the program.
2. Enter the location of the target Sage 300 SharedData folder or use the Browse button to find it.

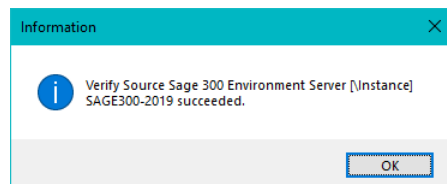


The program will fill in the Sage 300 database server and database names for the Sage 300 vault and store databases from the VaultSettings.ini file.

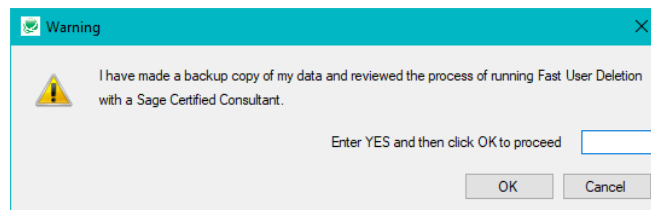
Use UNC paths to access the SharedData folder if it's on a different server.

3. Enter the SQL Server Login ID and password and click the Verify button to check that the login credentials are valid.

The program will display the following message if the login was successful.



4. If you are ready to proceed, click the Delete button at the bottom of the screen. The program will display the following message for you to confirm that you want to proceed.



5. Type "YES" in the message field and click the OK button to proceed.

The program will begin deleting users from the target Sage 300 databases.

Note that user deletion will not affect the ADMIN or GUEST logins in the target environment:

```
##S3_LOGIN_ADMIN##SAGE300VAULT
##S3_LOGIN_GUEST##SAGE300VAULT
```

These logins were created by Sage 300 when you set up the Sage 300 environment.

6. The program displays a log of all activity as it deletes users from the target Sage 300 environment.

```
Fast User Deletion Build 8799 created on 2024-02-03 started on SAGE300-2019 at 2024-02-05
11:49:09 AM
```

```
All users except for the Sage 300 Environment ADMIN and GUEST user will be deleted.
```

```
Delete users started.
```

```
Logging in to Sage 300 Environment Server [\Instance] SAGE300-2019 Master Database...
```

```
Logging in to Sage 300 Environment Server [\Instance] SAGE300-2019 Vault Database
```

```
Sage300Vault...
```

```
Logging in to Sage 300 Environment Server [\Instance] SAGE300-2019 Store Database
```

```
Sage300Store...
```

```
Loading users to delete from Sage 300 Environment Server [\Instance] SAGE300-2019...
```

```
Loading users to create from Sage 300 Environment Server [\Instance] SAGE300-2019
```

```
complete.
```

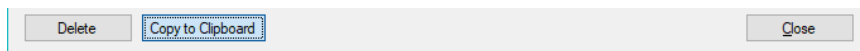
```
Deleting users from Sage 300 Environment Server [\Instance] SAGE300-2019...
```

```
Deleting user CARLA...
```

```
Deleting user CARLA completed.
```

```
Deleting user DON...
```

7. Click the Copy to Clipboard button when deletion is complete to copy the log to the clipboard, then paste to a file to keep a record of user deletion for later reference.



Notes Regarding Deletion

- All users except for the Sage 300 Environment ADMIN and GUEST user will be deleted. These logins were created by Sage 300 when you set up a new Sage 300 environment.

```
##S3_LOGIN_ADMIN##SAGE300VAULT
##S3_LOGIN__GUEST_##SAGE300VAULT
```
- The program deletes users from [SQL Server Name] > Security > Logins and from the Sage 300 Vault and Store databases.