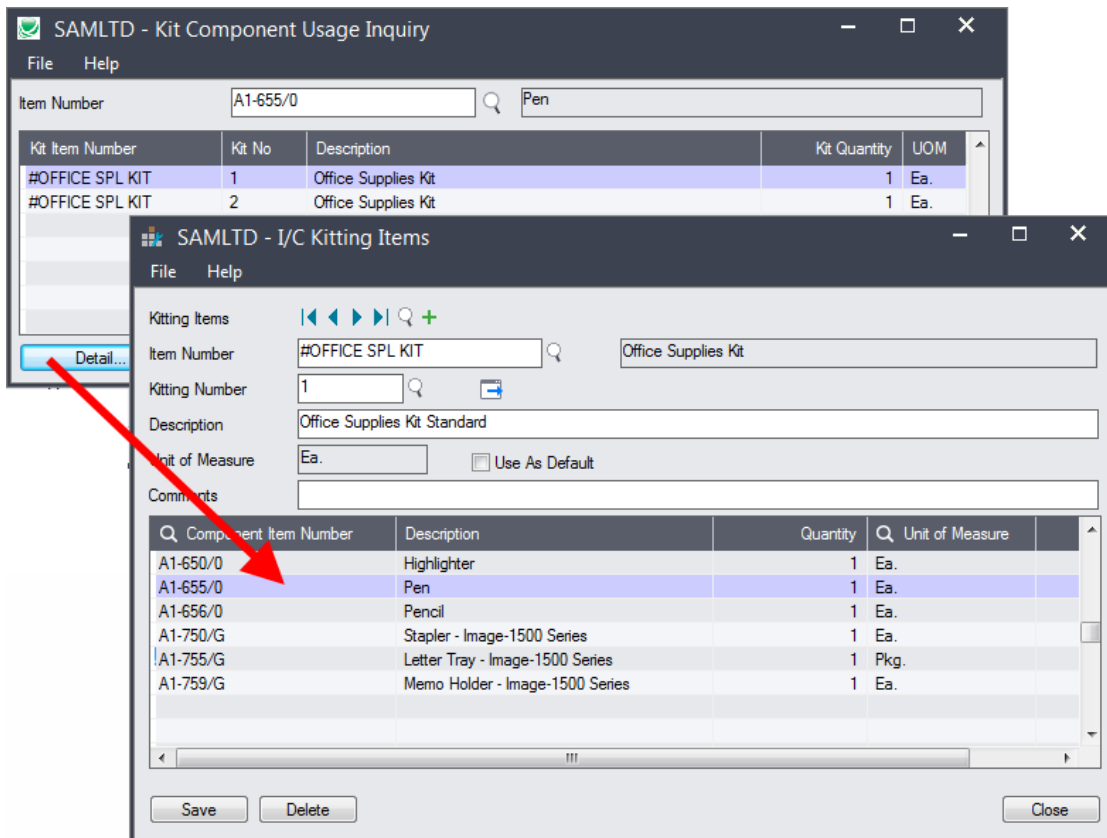


Kit Component Usage Inquiry

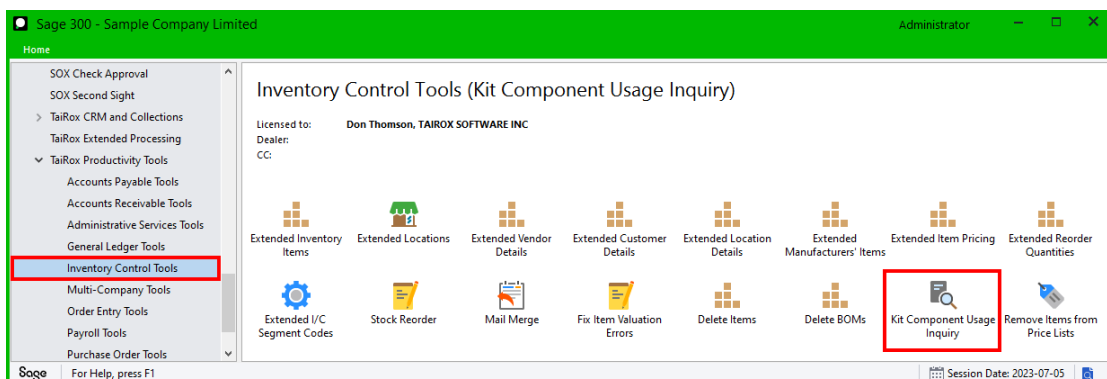
Kit Component Usage Inquiry lets you quickly list kits where items appear as components, drill down to kit components, and change them if necessary.

The following screens list the kits with item A1-655/0, as well as the component list for the first kit that includes the item – allowing you to drill down and edit items in the selected kit.



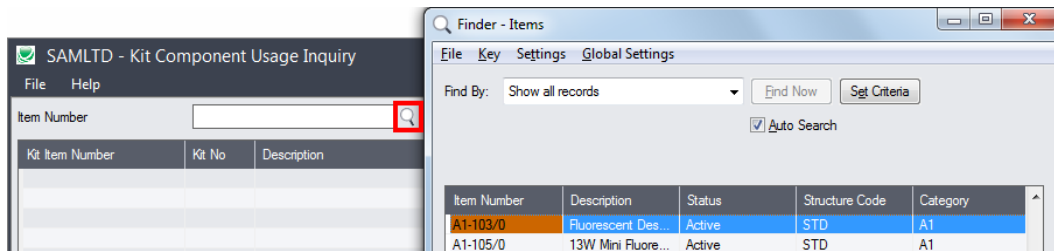
Using Kit Component Usage Inquiry

The Kit Component Usage Inquiry icon appears under **TaiRox Productivity Tools > Inventory Control Tools** on the Sage 300 desktop and can be copied to other menu locations.

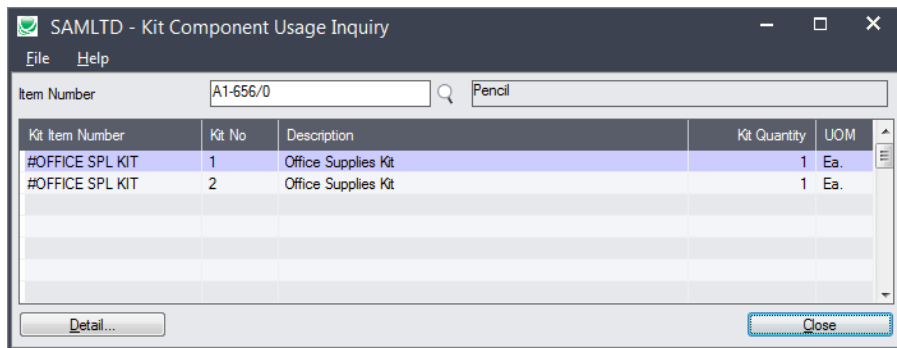


Looking up Inventory Items and editing kit components

- Open Kit Component Inquiry Usage.
- Use the Finder in the Item Number field to look up item numbers, and choose an item from the Finder list.



- The program will list all kits that include the item you selected.



- Click the Detail... button to drill down to the kitting items to view and edit items in the kit.

